



**procient**  
When Performance Matters !



**ONE STOP SOLUTION FOR DISTILLERY PLANT**



## About procient

We are known for our technically evolved offerings in the world of turn key distillery projects in India and abroad..

ProTECH – our basket of technodules is derived out of experience of 20 years and are known for our deliverables.

Procient is also Proud Pioneers for ProFAM our functionality assurance module and ProWATCH our remote plant assistance module. Continuity and Consistency of the plants we supply are the virtues by which we live!



**Uday Rode**  
Managing Director

“ Our principle of no compromise with technicalities has helped us build our reputation! We are entitled to stick by it in rest of our journey! ”



**Tushar Narkhede**  
Director

“ Procient's distillery plants are for results and not for excuses! ”

## Business Areas



**Turnkey Distillery Plants**



**Plant Upgradation and Revamping**



**Waste Water Treatment System For ZLD**



**Process Technology Modules**



**Project Management Services**



**Plant Analysis for Improvement**



**Cane Juice**



**Syrup**



**B Heavy Molasses**



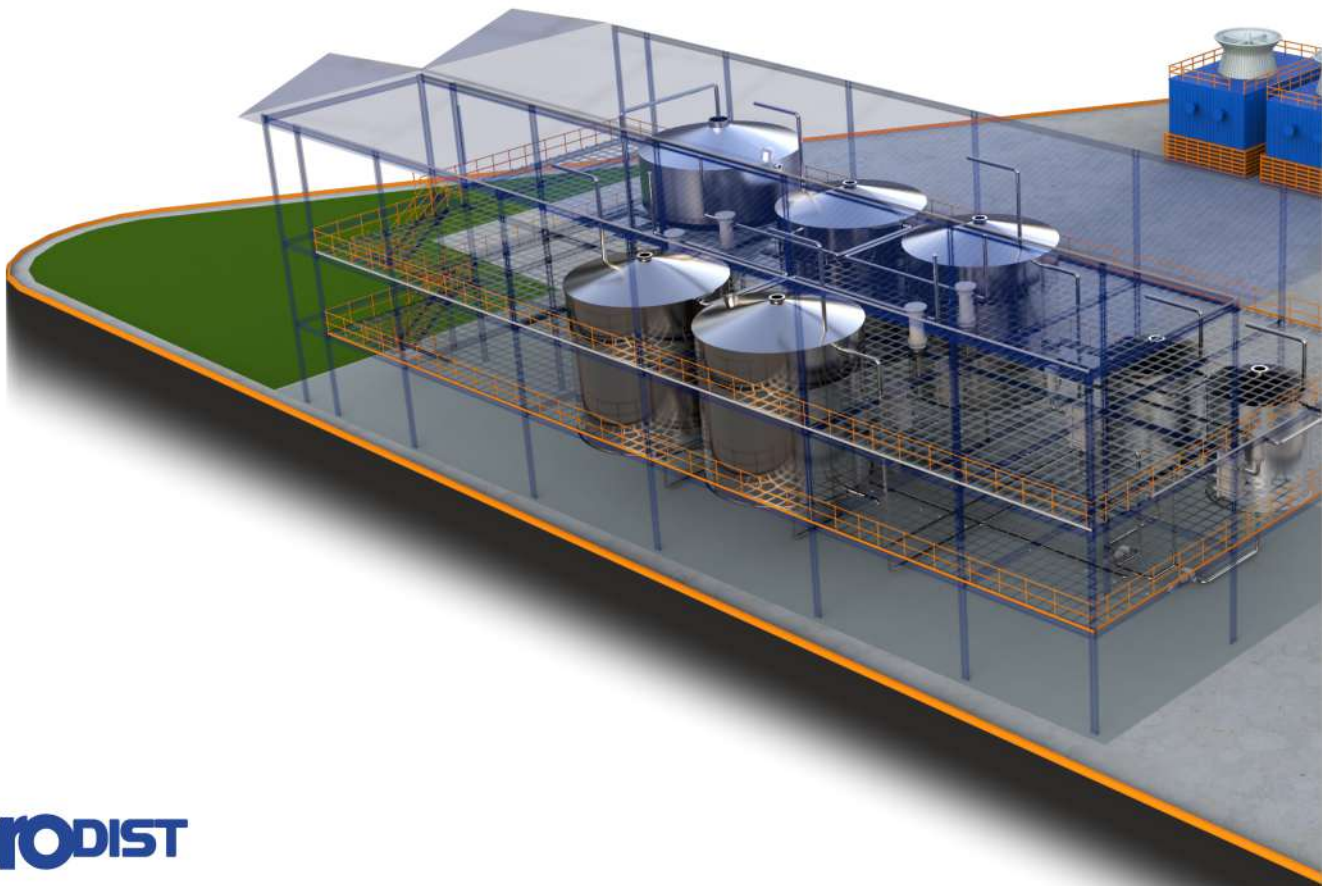
**Grain**



**Cassava / tapioca**

## ◆ **proFERM**

- ◆ Dual Pre-fermenters with 100% assurance of yeast development
- ◆ High Brix fermentation ensuring alcohol Concentration upto 13%
- ◆ Tried and tested range of enzymes customized to suit the conditions of fermentation
- ◆ Mandatory incorporation of WST ensuring best of it's Kind Sludge separation



## ◆ **proDIST**

- ◆ Zero Compromise when it requires to ensure performance – Simmering column is manufactured in Complete Copper
- ◆ Specific use with technical synopsis while consideration of Bubble Cap Trays
- ◆ Maximum number of trays in columns
- ◆ Finest possible quality outcome
- ◆ Fastest possible startup after small fluctuations

## ◆ **proDEHY**

- ◆ Stand by Mode ensuring zero stoppage during maintenance
- ◆ This enables operator to Pause the part of this section and not plant when small maintenance work is required to be done
- ◆ This in turn ensures capability of plant to function without stoppages
- ◆ 20% enhance in life of molecular sieves



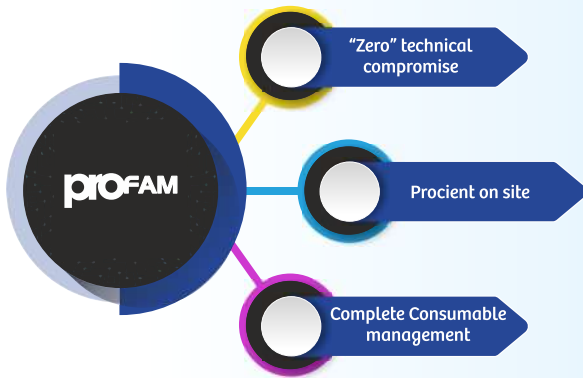
## ◆ **proVAP**

- ◆ No compromise when it comes to design – No consideration of Falling film Evaporator beyond 30% solids
- ◆ State of art evaporator distribution plate design
- ◆ This ensures less choking and hence maintenance free functioning of plant for longer duration
- ◆ Record 45 Days continuous functionality without downtime for cleaning
- ◆ Reduction in down time and hence reduction in overall production cost

## ◆ Our Clientele

- ◆ Sar Senapati Santaji Ghorpade Sugar Factory Ltd.,- Maharashtra
- ◆ Athani Sugars Limited., - Karnataka
- ◆ Khandoba Biorefineries Pvt. Ltd., - Maharashtra
- ◆ MRN Bhima Sugar & Power Ltd., - Maharashtra
- ◆ Gangamai Industries & Construction., - Maharashtra
- ◆ Gwalior Distilleries Pvt. Ltd, Bhind., - Madhya Pradesh
- ◆ DDN SFA Unit 2, Osmanabad., - Maharashtra
- ◆ Karthik Agro Industries Pvt. Ltd., - Bagalkot, Karnataka
- ◆ Dalmia Bharat Sugar and Industries Ltd., - Kolhapur, Maharashtra
- ◆ Indian Sugar Manufacturing Co. Ltd., - Bijapur, Karnataka
- ◆ Vaibhav Liquors Pvt. Ltd., - Washim, Maharashtra
- ◆ Atharv Intertrade (Leased Dault SSK), - Chandgad, Kolhapur
- ◆ Adlers Bioenergy Ltd., - Dhoki, Osmanabad, Maharashtra
- ◆ Starchem Industries (Leased Siddheshwar SSK),- Sillod, A Beed, Maharashtra
- ◆ Victoria Agro Food Processing Pvt. Ltd.,- Maharashtra
- ◆ Shriram Trading Co. Ltd.,- Maharashtra
- ◆ Leading Distilleries Ltd., - Kampala, Uganda
- ◆ Meridian Technic., - Sinnar, Nashik, Maharashtra
- ◆ Kisanveer S.S.K. Ltd.,- Maharashtra
- ◆ National Industrial Corporation Ltd.,- New Delhi
- ◆ Win Brothers Group Co. Ltd., - Myanmar
- ◆ Myanmar Distillery Co. Ltd.,- Myanmar
- ◆ Shwe Hinn Thar Distillery.,- Myanmar
- ◆ Kyar Min Gyi Company Ltd.,- Myanmar
- ◆ Myanmar Economic Corporation.,- Myanmar
- ◆ Shwe Myanmar Distillery.,- Myanmar
- ◆ Millennium Alcobev Company Ltd.,- Myanmar
- ◆ Nagarjuna Industries Ltd. (NIVL),- Vietnam
- ◆ Bwendero Dairy Farm.,- Uganda
- ◆ Oasis Alcohol India Pvt. Ltd.,- Maharashtra
- ◆ Cox India Ltd.,- Madhya Pradesh

# proFAM | Plant Functionality Assurance Module



### A lot at stake

Issues with plant functionality can cost supplier 10% of project, whereas for distillery owner; 90% of the investment remains at stake.



### Consumable Management

Enzymes and Chemicals are the consumables required to be maintained at distillery, cost of which is never considered.



### Plant Commissioning

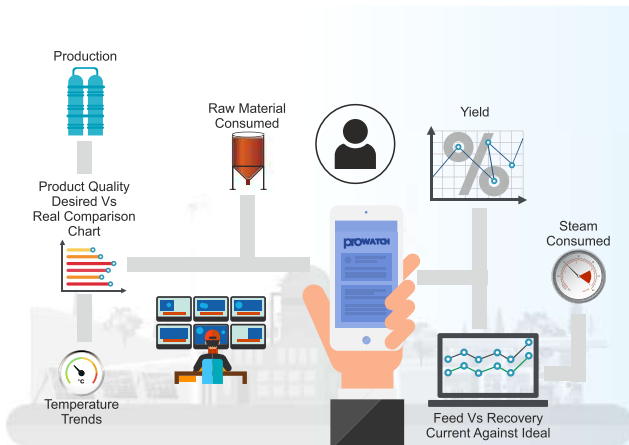
Commissioning can be achieved by minor manipulation even with technically compromised plant. Commissioned plant does not ensure functionality in longer run.



### Plant Management Expertise

Plant is commissioned by supplier's representative whereas it is needed to be operated by onsite authorities and it takes time for them to get hang of the operational procedure of the plant.

# proWATCH | Ahead of its time



In order to make sure day to day updates of Distillery plant are not missed out, With ProWatch, Procient provides following.



Live feed of pre-selected parameters from plant to multiple smart devices.



ProWatch's mobile extension enables authorities to use the mobile application to check live parameters from plant.



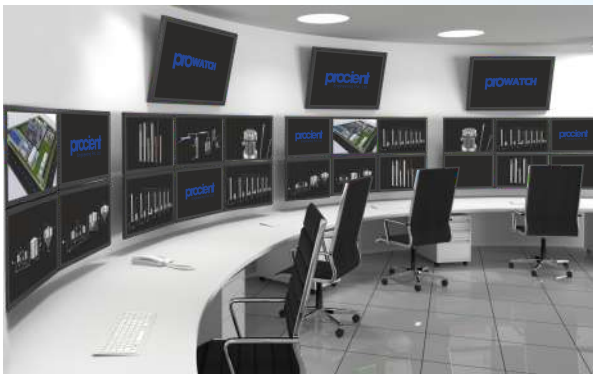
ProWatch also provides an algorithm with which comparisons with designed conditions are availed pinpointing exact progress.



ProWatch's report extension provides annual functionality report of the plant with overall annual yield, power consumption and down time.



ProWatch<sup>Master</sup> extension helps our technical analysers to watch out for your plant continuously and extend technical assistance.





## PROCIENT ENGINEERING PVT. LTD.

-  Office No. 215 & 303, B Building, G.O. Square, Survey No. 249,250 & 251, Near Mankar Chowk, Wakad, Pune – 411057 (India).
-  Atul Industrial Premises, Plot No. - 25, Survey No. - 1A, Dehu Alandi Road, Talawade, Pune - 412114, India
-  +91 73 500 16 618 / +91 99 700 71 666
-  [sales@procient.in](mailto:sales@procient.in)
-  [www.procient.in](http://www.procient.in)